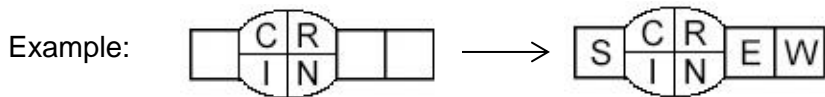


Split Decisions | Devil Cross (www.devilcross.com)

By Evan Birnholz

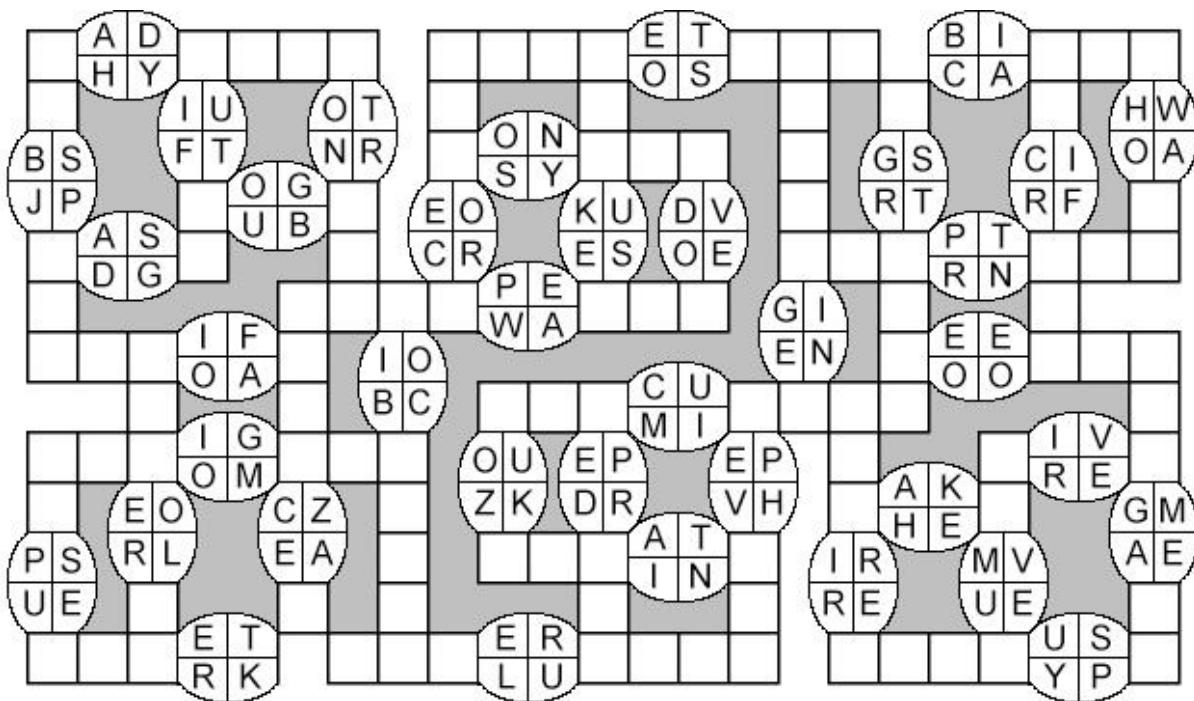
December 27, 2014

A Split Decisions puzzle is a crossword where you are given no clues except for the pairs of letters provided in the grid. Each Across and Down answer consists of two words that can fit the letter combinations. In the example below, you can enter S, E, and W in the empty squares to complete the words SCREW and SINEW.



Here are a few things to keep in mind:

- 1) All answers in the grid are one word, so there are no multi-word phrases.
- 2) There are no proper nouns in the grid. BUT, I may use some slang words from time to time.
- 3) Some combinations in the grid may produce more than one possible answer, but there is only one correct solution for the entire puzzle.



Split Decisions puzzles were originally created by George Bredehorn. My thanks, George.